

# ESTUAIRE

## NANTES <> SAINT NAZAIRE

### LANDSCAPE, ART AND THE RIVER



*Le Jardin étoilé, Kinya Maruyama © Philippe Piron*

## PRESS KIT

### CONTACT DETAILS FOR NATIONAL PRESS :

Claudine Colin Communication  
estuaire@claudinecolin.com / +33 (0)1 42 72 60 01

### INTERNATIONAL PRESS CONTACT DETAILS :

Le Voyage à Nantes  
Xavier Theret : xavier.theret@lvn.fr



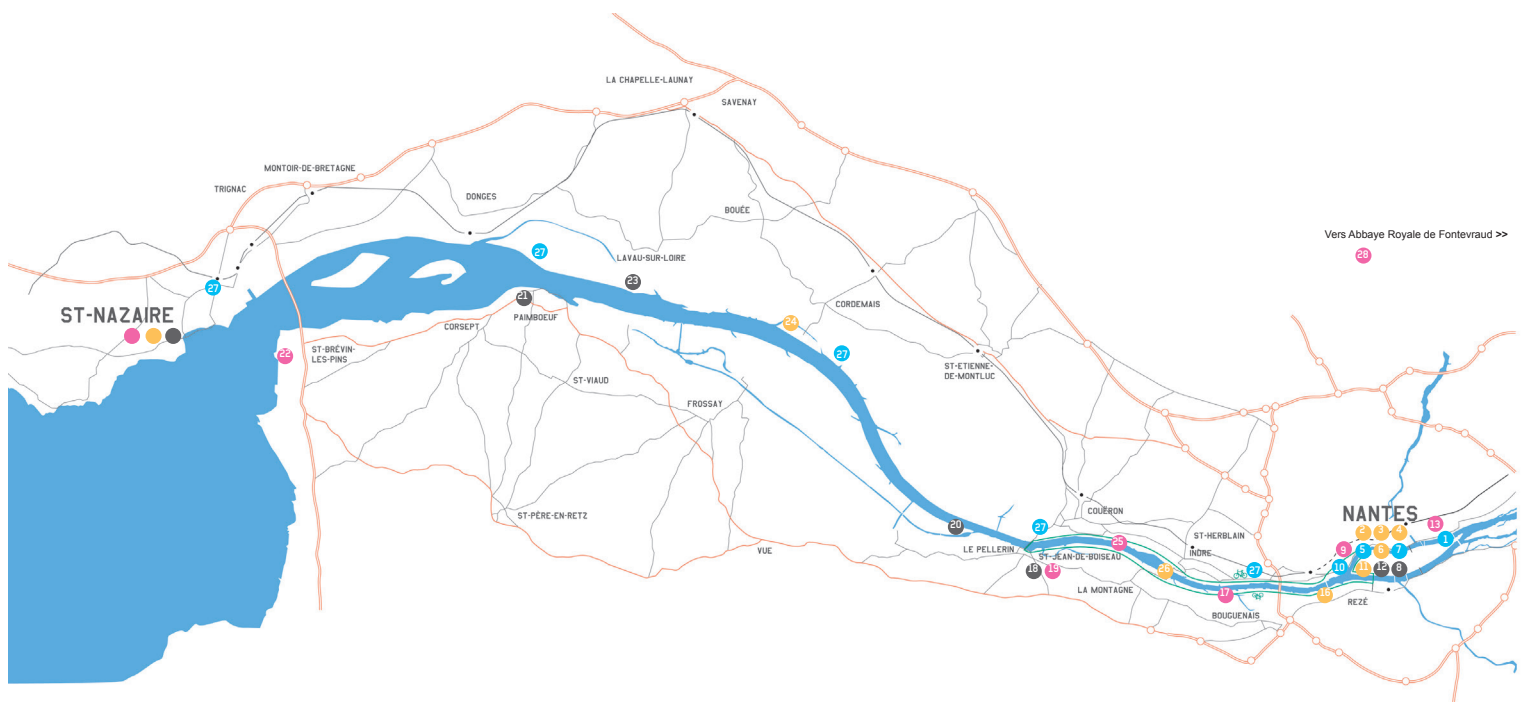
WWW.ESTUAIRE.INFO  
september 2019





© Mathieu Bernard-Reymond/LVAN

## THE TRAIL ON THE ESTUARY



### THE TRAIL IN NANTES

1. Île de Nantes, pointe Est - François Morellet
2. Île de Nantes / École d'architecture - Atelier Van Lieshout
3. Île de Nantes, Bâtiment Manny - Rolf Julius
4. Île de Nantes, Bâtiment Manny - Angela Bulloch
5. Île de Nantes, Bâtiment Aethica - Lilian Bourgeat
6. Parc des Chantiers - Station Jean Prouvé
7. Parc des Chantiers (Grue Jaune) - Vincent Mauger
8. Quai des Antilles - Daniel Buren & Patrick Bouchain
9. Quartier Chantenay / Butte Sainte-Anne - Mrzyk & Moriceau
10. Butte Sainte-Anne / Tadashi Kawamata
11. Île de Nantes, Bât. Harmonie Atlantique - François Morellet
12. Canal Saint-Félix - Ange Leccia
13. Petite Amazonie - Observatorium

### THE TRAIL ON THE ESTUARY

#### SOUTH BANK

16. Rezé-Trentemoult - Roman Signer
17. Bouguenais / Port Lavigne - Sarah Sze
18. Saint-Jean-de-Boiseau - Jeppe Hein
19. Saint-Jean-de-Boiseau - 6 Chambres d'artistes au château du Pè
20. Le Pellerin - Erwin Wurm
21. Paimboeuf - Le Jardin étoilé
22. Saint-Brevin-les-Pins - Huang Yong Ping

#### NORTH BANK

23. Lavau-sur-Loire - Tadashi Kawamata
24. Cordemais - Tatzu Nishi
25. Couëron - Jean-Luc Courcoult
26. Indre - Jimmie Durham
27. Saint-Herblain - Couëron - Saint-Étienne-de-Montluc - Donges - Saint-Nazaire - Vincent Mauger

### THE TRAIL IN SAINT-NAZAIRE

14. Toit de la base des sous-marins - Gilles Clément
14. Toit de la base des sous-marins - Gilles Clément
15. Terrasse panoramique - Felice Varini

### Fontevraud

28. Abbaye Royale de Fontevraud - Claude Lévêque

- Artworks created for Estuaire 2007
- Artworks created for Estuaire 2009
- Artworks created for Estuaire 2012
- Artwork created out of Estuaire event

## LANDSCAPE, ART AND RIVER

Ever since 2007, installations created by internationally renowned artists in Nantes, Saint-Nazaire and along the banks of the river Loire, have led visitors to unusual sites. Whether in Nantes or Saint-Nazaire, *Estuaire* provides you the opportunity to stroll around and discover the historic and contemporary heritage of both cities on the estuary, discover the beauty of the Loire river and the diversity of the surrounding landscapes.

Rich wildlife reserves rub shoulders with gigantic industrial buildings and maritime heritage. Discovering the installations by the land will not only give you the opportunity to get a close look at the artworks, but also will make you feel the unique spirit of the estuary.

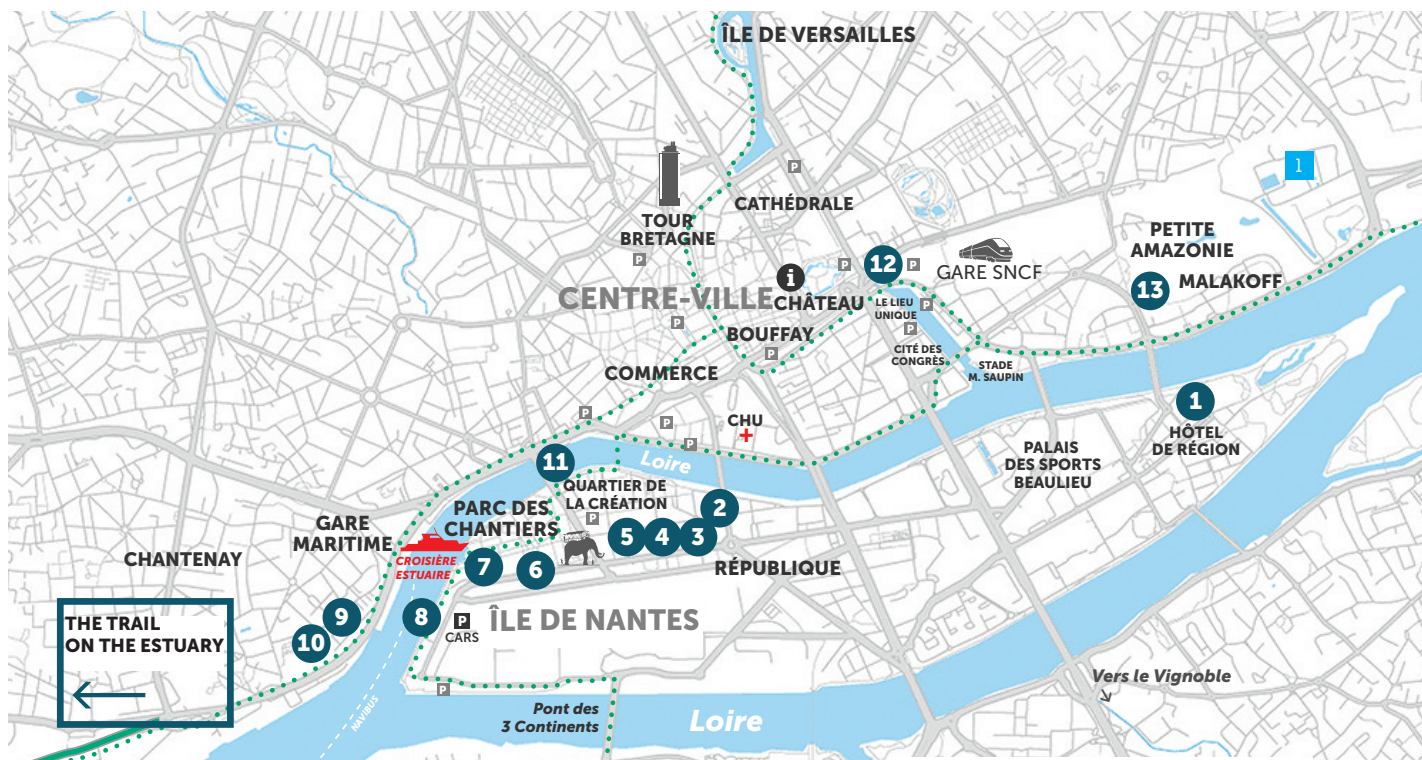
*Estuaire* is also a political and touristic project, specifically aiming to accompany and stimulate the foundation of the Nantes – Saint-Nazaire metropolis, and using the physical line drawn by the Loire river as the basis of a tour full of secrets.

The strength of *Estuaire* is also to be at the meeting point of all partners, environmental associations, industries, farmers, local professional bodies, fishermen, hunters and the Coastal Protection Agency: all working hand in hand to increasingly make of the estuary a European touristic destination.

*Estuaire* is now a collection of 33 artworks : an open-air arts trail to discover all year long.

Jean Blaise,  
General Director of Le Voyage à Nantes - Estuaire





## THE TRAIL IN NANTES



**1**  
Parvis de l'ensa Nantes  
(école d'architecture)  
**FRANÇOIS MORELLET**  
Portail 0°-90°  
Portail 8°-98°



**6**  
Île de Nantes  
Parc des Chantiers  
**JEAN PROUVÉ**  
Station Prouvé



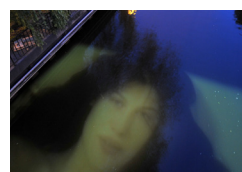
**11**  
Île de Nantes  
Bâtiment Harmonie  
**FRANÇOIS MORELLET**  
De temps en temps



**2**  
Parvis de l'ensa Nantes  
(école d'architecture)  
**ATELIER VAN LIESHOUT**  
L'Absence



**7**  
Île de Nantes  
Parc des Chantiers  
**VINCENT MAUGER**  
Résolution des forces  
en présence



**12**  
Canal Saint-Félix  
**ANGE LECCIA**  
Nymphéa



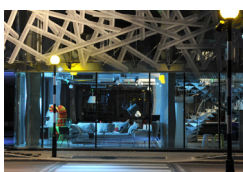
**3**  
Rue-Lanoue-Bras-de-fer  
Bâtiment Manny  
**ROLF JULIUS**  
Air



**8**  
Île de Nantes  
Quai des Antilles  
**DANIEL BUREN  
& PATRICK BOUCHAIN**  
Les Anneaux



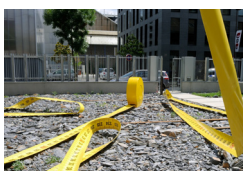
**13**  
Quartier Malakoff  
**OBSERVATORIUM**  
Pêche sauvage



**4**  
Rue-Lanoue-Bras-de-fer  
Bâtiment Manny  
**ANGELA BULLOCH**  
The Zebra Crossing [...]



**9**  
Quartier Chantenay  
Square Schwob  
**MRZYK & MORICEAU**  
Lunar tree



**5**  
Rue-Lanoue-Bras-de-fer  
Bâtiment Aethica  
**LILIAN BOURGEAT**  
Mètre à ruban



**10**  
Quartier Chantenay  
**TADASHI KAWAMATA**  
Belvédère de l'Hermitage





© Bernard Renoux

NANTES  
MALAKOFF DISTRICT  
(PETITE AMAZONIE)  
**OBSERVATORIUM**  
*PÉAGE SAUVAGE*

After suffering from the bombing during WW2, this site was part of an urban renewal project in the 1970s. Finally, when the idea of a city highway was abandoned, nature had already taken over. The site was called “La petite Amazonie” and is a nature reserve with limited access. Observatorium tells the story, using a “contemporary fairy tale”: an impressive wooden sculpture represents a section of highway that is, at the same time, both a public place and an observatory for this unique natural environment.

-

Geert van de Camp, Andre Dekker and Ruud Reutelingsperger founded the artist group Observatorium in 1997.

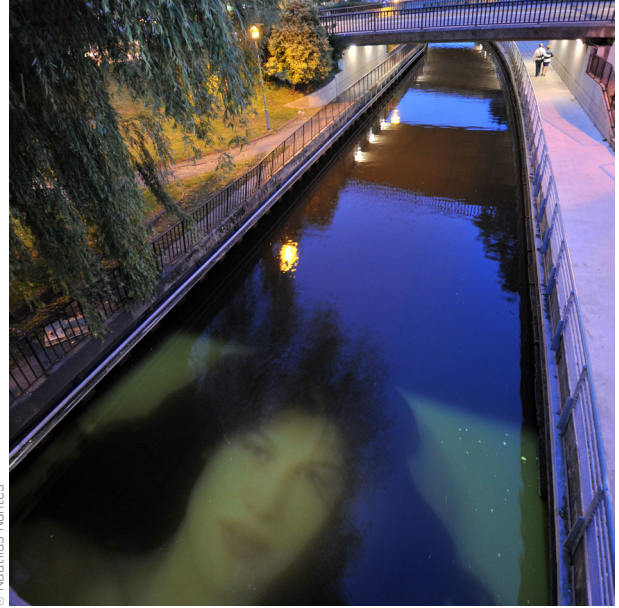
Observatorium aspires to put brackets our everyday life and place it in parks and natural spaces where every individual can take time to immerse him/herself, because «perceiving our environment is impossible without first looking at oneself». Indeed, the Rotterdam collective favours the use of their artwork by inviting people to appropriate it in their own way.

[www.observatorium.org](http://www.observatorium.org)

-

GPS : 47.216056 / -1.53049

*Work created for Estuaire 2012 as part of a public commission by the ministère de la Culture et de la Communication – DRAC des Pays de la Loire, with the support of the EDF Fondation for the EDF group, and the Groupe Giboire, Official Partners.*



© Nautilus Nantes

NANTES  
CANAL SAINT-FÉLIX  
**ANGE LECCIA**  
*NYMPHÉA*

*Nymphéa* is a video projected onto the surface of the canal. A woman calmly floats about in her aquatic environment. This double presence of water in the image, and as a medium for image, creates a blurring effect and the result is deeply disturbing. This sprite is embodied by Laetitia Casta, an icon of our society who here becomes a contemporary mythical nymph.

-

Born in 1959, Ange Leccia is a former resident of the Villa Medici in Rome. First a painter, he then decided to use the video as his creative medium.

His “arrangements”, as he likes to call them, are born from people he meets mixed with a specific alteration of still images and moving images; which can either be torn, slowed down or cut..

[www.galeriealminerech.com](http://www.galeriealminerech.com)

-

GPS : 47.216162 / -1.546553

*Nymphéa* is visible from nightfall.

*This work was created for Estuaire 2009 thanks to the support of Total, Official Partner, with the help of Semitan.*





© Gino Maccarinelli

ÎLE DE NANTES  
FORECOURT OF THE ARCHITECTURE  
SCHOOL (ENSA NANTES)  
**ATELIER  
VAN LIESHOUT**  
*L'ABSENCE*

*L'Absence* is a sculpture that is in dialogue with its architectural environment. It appears to be a moving and living mass, with its multiple protuberances, like the embodiment of an instinctive gesture that is no longer limited by either form or function. This intuitive form is habitable: the artist has turned it into a place for life and discussion.

- Founded in 1995 by Joep Van Lieshout, AVL is a multidisciplinary company known for its contemporary art, design and architectural projects. Functional, simple, often imposing, their works often take the shape of furnitures, prefabricated houses, sculptures or renovation of architectural monuments. Based in the port of Rotterdam, a team of 20 people is in charge of the production of all pieces (from conceptualization to construction). Giving priority to an independent and autonomous lifestyle for each and everyone, they often look into the conflict between individuality and collective, sexuality, power and utopia.

[www.ateliervanlieshout.com](http://www.ateliervanlieshout.com)

GPS : 47.207518 / -1.556808

*Work created for Estuaire 2009 as part of a public commission by the ministère de la Culture et de la Communication – DRAC des Pays de la Loire. (within the framework of the 1% Artistic of the new School of Architecture of Nantes).*



© Bernard Renoux

ÎLE DE NANTES  
RUE LA-NOUE-BRAS-DE-FER  
MANNY BUILDING  
**ANGELA BULLOCH**  
*THE ZEBRA CROSSING, REGULATIONS  
AND GENERAL DIRECTIONS*

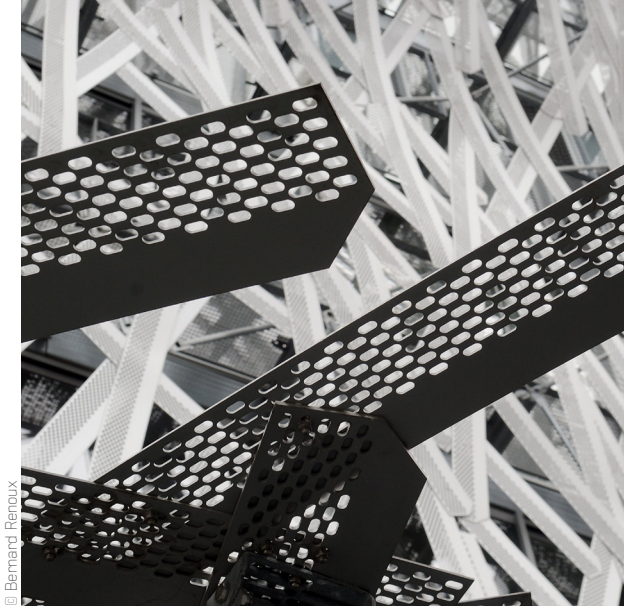
Angela Bulloch aims to subvert existing systems, rules or structures. Here, the work highlights the Manny building, signed by the agency Tetrac for the group Coupechoux, and interacts with its immediate environment. Taking her inspiration from pedestrian crossings in Britain, she has redesigned the public space outside the building and creates an impression of disturbance, sowing doubt in the minds of pedestrians.

- Angela Bulloch's work is multi-faceted. By questioning our world's order, Angela Bulloch takes possession of daily objects and gives them a dimension which goes far beyond their original function. Technology plays a major part in her work.

Since her arrival on the artistic scene at the end of the 90's, Angela Bulloch's work is characterised by a new alternative to the "avant garde" artists of the the 1960's. Organising her artwork into "families", she simultaneously declines "interactive" works (or even works in which a gesture from the spectator is an integral part of the display) which play on language, light displays (like on the Paris tramway or the Berlin Reichstag), videos or even automated drawing machines.

GPS : 47.20696 / -1.561185





© Bernard Renoux

ÎLE DE NANTES  
RUE LA-NOUE-BRAS-DE-FER  
MANNY BUILDING  
**ROLF JULIUS**  
*AIR*

In his work, Rolf Julius tirelessly sought to reveal the relationship between music and sculpture, or how to create “music for the eyes” (which is also the title of one of his compositions). One discovers *Air* by walking close to the Manny building. Under its metallic skin, a “gentle music for walls”, resonates and seems to subtly create an “audible façade”.

-

As an artist close to the Fluxus movement since the 1970's, Rolf Julius was both sculptor and musician. In fact, this is how he described his work : “I create a musical space with my art. With my music, I create an art space. Art and music are the same thing. There is a meeting of minds with the spectator and listener; and from deep inside, something new comes about.”\*

About Manny building, he said : “There is a movement of air around the building that you can feel as you get closer to it, if you relax...” Here, by treating the sound as a material, Rolf Julius was reducing the importance of the visual sense to rebalance the perceptive senses. As a result, a magnificent timeless and tactile sculpture comes out of Manny.”\*\*

\*Interview with Rolf Julius by Regina Coppola, an extract from *Large Black* (red), University Gallery, Fine Art Center, University of Massachusetts Amherst, 2001.

\*\*Rolf Julius – *Small Music* (grau), Kehler Verlag, Heidelberg, 1995, back cover.

-

GPS : 47.20696 / -1.561185



© Bernard Renoux

ÎLE DE NANTES  
RUE LA-NOUE-BRAS-DE-FER  
AETHICA BUILDING  
**LILIAN BOURGEAT**  
*MÈTRE À RUBAN*

This artist takes great pains to supersize everyday objects, while preserving their exact original appearance.

He realizes plastic cups of 40 cm in height that one can drink with (a difficult task if one does not want to spill the content), push-pins on cork panels of 36 cm of diameter, rubber boots of 3 meters height, etc.

By blurring reference marks, Lilian Bourgeat distorts the perception of not only the objects themselves, but also the space where they are installed. Focusing on the ties between art and world, via the relationship of representation and perception, he questions our comprehension of reality and disturbs the natural process by which we understand the world around us.

*Mètre à ruban* appears as if it were a monument dedicated to the simplicity of an everyday tool – but one which turns constructions from our imagination into concrete reality. This gigantic measuring tape is splayed out in the courtyard of the new headquarters of Aethica, a construction company.

-

GPS : 47.206865 / -1.562597

*This work was created thanks to the support of ADI (Aethica Group), Project Partner of Estuaire*





© Bernard Renoux

ÎLE DE NANTES  
HARMONIE ATLANTIQUE BUILDING  
**FRANÇOIS MORELLET**  
*DE TEMPS EN TEMPS*

The building for the insurance company Harmonie Atlantique has become the medium for a new image thanks to its recent renovation by Canal Atelier d'architecture. François Morellet has created a work that constantly changes and thereby avoids the tiresome vision of an unchanging artwork. Everyday, using three luminous "coverings", the façade allows clouds, a sun, or the rain to appear, announcing the weather in four hours' time!

-  
François Morellet's work reconciles mathematical and geometrical rigour with humour and chance. He refused to impose the arbitrary decision of the artistic process to the visitors. The result is a work where chance is somewhat mastered, and where the piece becomes its own referential point. He desecrated the romantic myth of the artist as a demiurge.

-  
GPS : 47.207912 / -1.564657



© Bernard Renoux

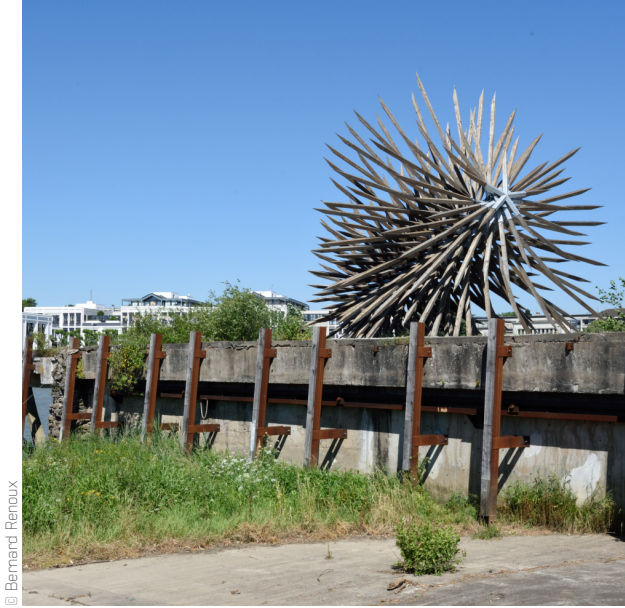
ÎLE DE NANTES  
PARC DES CHANTIERS  
**JEAN PROUVÉ**  
*STATION PROUVÉ*

Jean Prouvé (1901-1984) is considered as one of the greatest inventors of the architectural structures of the 20th century. His creations rank with the most significant accounts of the modern times. At the end of the 1960's, Total, the multinational company, called upon him to think out a new brand image : he developed the prototype of a petrol station which was conceived to be moved according to the variations in the road traffic.

-  
GPS : 47.205079 / -1.566944

Courtesy : Jean-François Gadet.





© Bernard Renoux

ÎLE DE NANTES  
NEARBY THE YELLOW CRANE  
**VINCENT MAUGER**  
*RÉSOLUTION DES FORCES  
EN PRÉSENCE*

Vincent Mauger explores the notions of space and landscape through different mediums: drawing, video, and especially sculpture. Starting with basic systems and construction materials, he creates objects or environments that play with mismatching scales, inviting visitors to constantly readjust their positions both physically and mentally. Since the methods used to build his works remain apparent, the spectator is allowed to take hold of them, imagine continuing their construction, or modify their configuration. The artist thus materializes what our mental space, our way of thinking, our physical presence in a given space and, by extension, our presence in the world might be. The strange object Mauger has designed, here, calls to mind the very idea of Nature itself through his choice of material: wood. Long stakes are attached to a central matrix, creating a kinetic effect when one walks around it. The mind then tries to find a use for it, thus revealing the object's ambiguity. Like a medieval or antique war machine, its size and volume make it majestic – and just as equally frightening.

-  
GPS : 47.205314 / -1.570517



© Bernard Renoux

ÎLE DE NANTES  
QUAI DES ANTILLES  
**DANIEL BUREN  
& PATRICK BOUCHAIN**  
*LES ANNEAUX*

*Les Anneaux* represents the link between two eras : the great maritime and naval past of the town, and today's great architectural and urban projects, putting Nantes on the European stage.

Daniel Buren wanted to reveal the double perspective offered by the tip of the island: the architectural one, created by the quay, and the natural one, created by the Loire as it opens onto the estuary. A series of 18 rings turns towards the river, offering frames onto the river landscape. At night, the enlightened rings – red, blue and green, three colours at the basis of so many others – become multiseeing tools.

-  
Daniel Buren is, without a doubt, the most famous French contemporary visual artist in the world since *Les Deux Plateaux*, his installation in the courtyard of the Palais Royal in Paris (1986). In 1965, Buren designs what will become his trademark, his "visual tool" : art works using striped awning canvas. The stripe is a standard 8,7 cm wide. Recognisable, simple, minimal, Daniel Buren uses this design – invariable where everything varies and moves around – in the street: his pieces become "seeing tools".

[www.danielburen.com](http://www.danielburen.com)

-  
GPS : 47.201566 / -1.573319

*This work was created for Estuaire 2007 thanks to the support of Groupe Coupechoux*



© Bernard Renoux

NANTES (CHANTENAY DISTRICT)  
SQUARE MAURICE-SCHWOB  
**MRZYK & MORICEAU**  
*LUNAR TREE*

*Lunar Tree* takes the form of a pristine white dead tree, 12m (40 feet) tall. By day, it rises out of the river; at night, a halo of light emanates from each of the tree's branches, which surges out against the black background. This piece for the cliffs of the Butte Sainte-Anne is their first autonomous sculpture.

-  
Petra Mrzyk (b. 1973) and Jean-François Moriceau (b. 1974) have been working collaboratively since 1998. Known for their detailed black-and-white ink drawings, their work teeters on the absurd, humorous, and perverse. With an ironic nod to commercial illustration, comics, and graphic design, they pluck imagery from contemporary visual culture. In their work, anything becomes possible. Animals take on human traits; inanimate objects disturbingly come to life; and the surreal is the norm.

Mrzyk and Moriceau have had solo exhibitions at Air de Paris, Paris (2008, 2004), Caixa Forum, Barcelona (2008), Los Angeles County Museum of Art (2006), Mamco, Geneva (2004). They have exhibited their work internationally in group exhibitions, and have produced music videos for Air, Katherine, Sébastien Tellier and others. The artists live and work in Châtillon-sur-Indre, France. Texte © Ratio 3 (USA)  
[1000dessins.com](http://1000dessins.com)

-  
GPS : 47.200929 / -1.57899

*Work created for Estuaire 2012 as part of a public commission by the ministère de la Culture et de la Communication – DRAC des Pays de la Loire. With support from Eiffage Immobilier and the Service des Espaces Verts et de l'Environnement de la Ville de Nantes.*



© Martin Anyraglo

NANTES (CHANTENAY DISTRICT)  
BUTTE SAINTE-ANNE  
**TADASHI KAWAMATA**  
*BELVÉDÈRE DE L'HERMITAGE*

Through his artworks, Tadashi Kawamata tries to create or recreate the link between humans and places. His works are almost always ephemeral and made of wood, leeching off of already existing architecture in its tiniest interstices, invading landscapes to better reveal them. Through the very simplicity of his fetish material and its infinite building potential, he shines a light on the identity of these places, as well as the fragility of precariousness of the human world.

For Nantes, Tadashi Kawamata designed the Belvédère de l'Hermitage. This work is made entirely of wood, and opens onto a long, narrow footbridge that is slightly sloped and surrounded by high fences. In doing so, it offers a framed perspective of the sky and river. This rectilinear and stable path continues to extend without the fences, then hangs, cantilevered above the cliff. From this dizzying height, visitors step towards the void and discover the unobstructed view of the city and river.

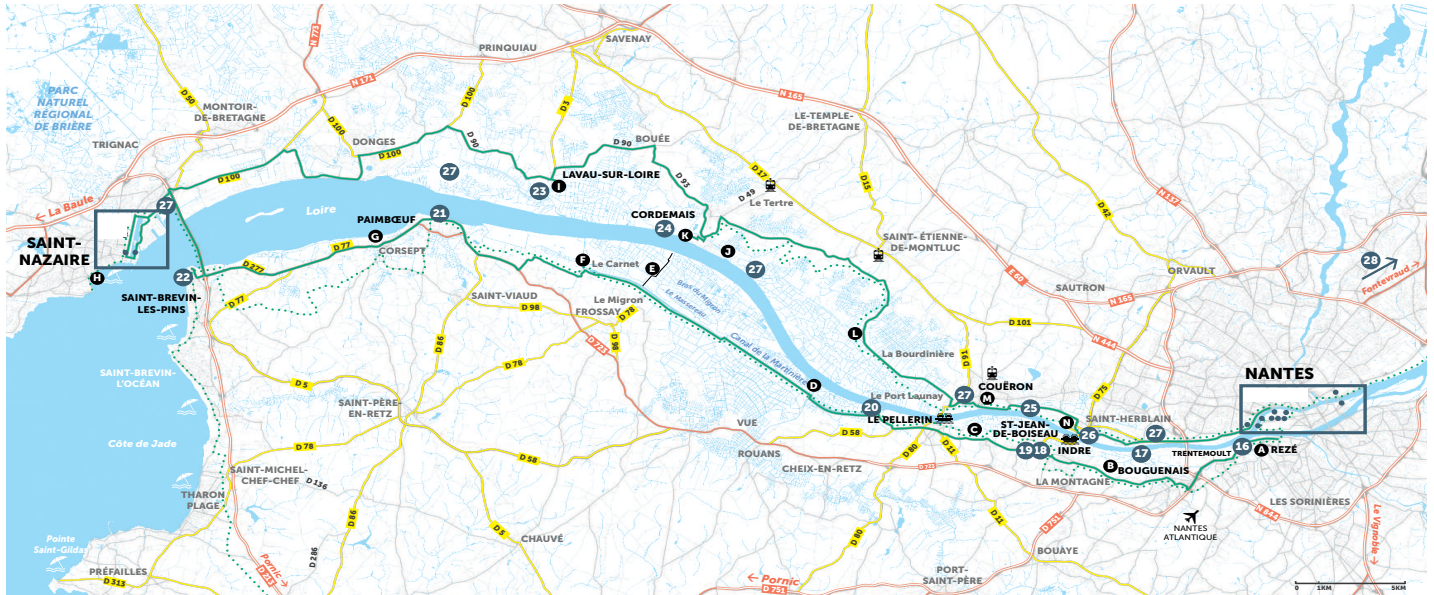
-  
In order to blend in with the landscape, Kawamata has chosen two types of wood: Bilinga, an exotic wood for the supporting structure, and pressure-treated grey larch for the deck, fencing and meshing. The footbridge is 2.8 metres wide and 36 metres long, 10 metres of which hang over the cliff almost 20 metres off the ground.

Tadashi Kawamata was born in 1953 in Hokkaido, Japan. He lives and works in Tokyo and Paris. He is represented by Galerie Kamel Menhour (Paris). Tadashi Kawamata has created in situ works worldwide, one of which is L'Observatoire in Lavau-sur-Loire, a permanent work and part of the Estuaire Nantes Saint-Nazaire collection.

GPS : 47.2012473 / -1.5780957

*Completed thanks to the support of GALEO, Project Partner.  
Project management: Nantes Métropole.*





### LEGENDE

#### RECOMMENDED ITINERARY BY CAR

#### LOIRE À VÉLO (EV6) / VÉLODYSSÉE (EV1) BY BICYCLE

NANTES / COUÉRON : 18KM, ENV. 1H30  
NANTES / LE PELLERIN : 25KM, ENV. 2H  
LE PELLERIN / PAIMBOEUF : 25KM, ENV. 2H  
PAIMBOEUF / ST-BREVIN : 18KM, ENV. 1H30  
CONTINUITÉ CYCLABLE : WWW.FRANCEVELOTOURISME.COM

TRAVERSÉE DU PONT DE SAINT-NAZAIRE : TRANSPORT DES VÉLOS !  
LILA LIGNE 17 (SUR RÉSERVATION) : T. 02 40 21 50 87  
ALLO TAXI SAINT-BREVIN : T. 02 40 27 23 07

BAC DE LOIRE  
PLAGE / BEACH

### SOUTH BANK

- 16. LE PENDULE / ROMAN SIGNER
- 17. THE SETTLERS (LES COLONS) / SARAH SZE
- 18. DID I MISS SOMETHING? / JEPPE HEIN
- 19. CHAMBRES D'ARTISTES AU CHÂTEAU DU PÉ
- 20. MISCONCEIVABLE / ERWIN WURM
- 21. LE JARDIN ÉTOILÉ / KINYA MARUYAMA
- 22. SERPENT D'OcéAN / HUANG YONG PING

### NORTH BANK

- 23. L'OBSERVATOIRE / TADASHI KAWAMATA
- 24. VILLA CHEMINÉE / TATZU NISHI
- 25. LA MAISON DANS LA LOIRE / JEAN-LUC COURCOULT
- 26. SERPENTINE ROUGE / JIMMIE DURHAM
- 27. LES SÉMAPHORES / VINCENT MAUGER
- + HORS PLAN / ABBAYE DE FONTEVRAUD : 28. MORT EN ÉTÉ / CLAUDE LÉVÊQUE

# THE TRAIL ON THE ESTUARY



16

Rezé (Trentemoult)  
**ROMAN SIGNER**  
*Le Pendule*



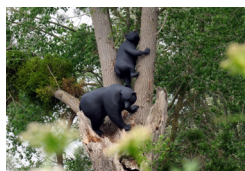
20

Le Pellerin  
(Canal de la Martinière)  
**ERWIN WURM**  
*Misconceivable*



24

Cordemais  
**TATZU NISHI**  
*Villa Cheminée*



17

Bouguenais  
(Port Lavigne)  
**SARAH SZE**  
*The Settlers*



21

Paimboeuf  
**KINYA MARUYAMA**  
*Le Jardin étoilé*



25

Couéron  
**JEAN-LUC COURCOULT**  
*La Maison dans la Loire*



19

Château du Pé  
Saint-Jean-de-Boiseau  
**CHAMBRES D'ARTISTES**



22

Saint-Brevin-les-Pins  
**HUANG YONG PING**  
*Serpent d'océan*



26

Indre  
**JIMMIE DURHAM**  
*Serpentine rouge*



18

Château du Pé  
Saint-Jean-de-Boiseau  
**JEPPE HEIN**  
*Did I miss something?*



23

Lavau-sur-Loire  
**TADASHI KAWAMATA**  
*L'Observatoire*



27

Saint-Herblain, Couéron,  
Saint-Étienne-de-Montluc,  
Donges, Saint-Nazaire  
**VINCENT MAUGER**  
*Les Sémaphores*



## ESTUAIRE NANTES<>SAINT-NAZAIRE THE TRAIL ON THE ESTUARY



### BY THE SOUTH REZÉ (TRENTEMOUT) **ROMAN SIGNER** *LE PENDULE*

Rezé has a strong architectural heritage (Le Corbusier, Dominique Perrault or Massimiliano Fuksas). One of its quarter, a former fisherman village, overlooks the river: Trememoult. Here, there is an old concrete factory, built at the end of the sixties, and which is now derelict...

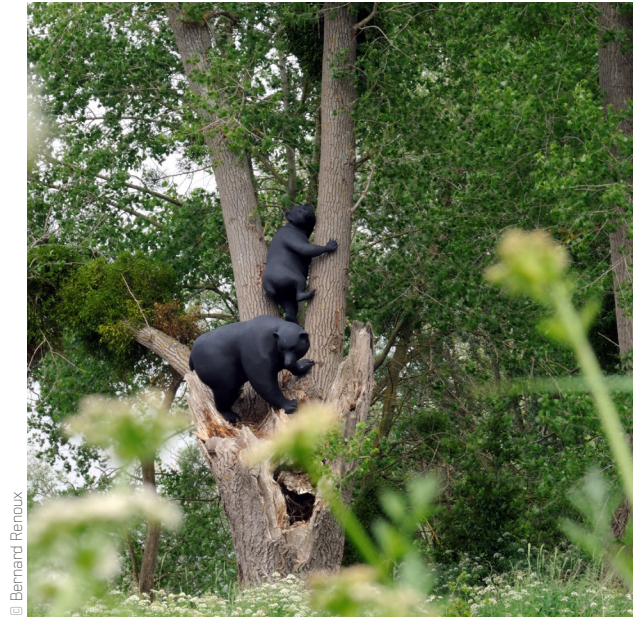
Roman Signer (1938, Appenzell) is known for particularly enjoying derelict buildings. For him, the plant is endowed with many qualities: proximity to the river; complex mechanics, and the ability to transform matter. It is these qualities and evocative power that Signer wished to reveal with his minimalist structure: a 7-meter (25-foot) long pendulum hanging off the building. This object regularly and inexorably stamps time out and creates a rhythm for the unending flow of the river, with its violent and calm power.

Roman Signer is famous all over the world for his "explosive" performances. Fascinated by the power of nature (storms, wind, volcanoes, geysers, glaciers, torrents), he keeps on pitting its strength against objects. Often putting himself at risk, his work is endowed with a unique and unprecedented poetic force.

[www.romansigner.ch](http://www.romansigner.ch)

GPS : 47.193941 / -1.584606

*Work created for Estuaire 2009 as part of a public commission by the ministère de la Culture et de la Communication – DRAC des Pays de la Loire. With support from Pro Helvetia.*



### BY THE SOUTH BOUGUENAIS / PORT LAVIGNE **SARAH SZE** *THE SETTLERS*

Sarah Sze (1969, Boston) creates works that exist in relation to a landscape or architectural context in which she places her light, aerial sculptures that play with contradictions. Often monumental, her works invite the spectator to stroll and discover new perspectives.

*The Settlers*, a work that is spread out over the art trail, invites one to explore and to feel the site. Three trees are literally "colonized" by a group of sculptures, creating a series of encounters that are improbable in our part of the world: in one, a bear cub climbs on a tree stump, helped by its mother; in the second, a jaguar lounges about; and, in the last one, a colony of monkeys swing from the third tree. Every animal is portrayed doing something natural: hunting, washing, playing, or sleeping.

The sculptures, perfectly realistic and visible from the river and the bank, are black and appear to be shadows. For the artist, "they play with the idea of a desire for a return to nature and the wild."

*The Settlers* is the first *in situ* permanent work from the artist.  
[www.sarahsze.com](http://www.sarahsze.com)

GPS : 47.190427 / -1.642768

*Work created for Estuaire 2009 as part of a public commission by the ministère de la Culture et de la Communication – DRAC des Pays de la Loire.*





*Est-il bien prudent d'envoyer  
des messages aux extra-terrestres ?*  
Mrzyk & Moriceau



*Antichambre*  
Frédéric Dumond et Emmanuel Adely



*Saturnia Pyri*  
Sarah Fauguet et David Cousinard



*La Grande question*  
Bevis Martin et Charlie Youle



*NEBELGLANZ*  
EVA & ADELE



*There Was a Bad Tree*  
John Giorno et Ugo Rondinone

## BY THE SOUTH SAINT-JEAN-DE-BOISEAU CHAMBRES D'ARTISTES AU CHÂTEAU DU PÉ

MRZYK & MORICEAU / FRÉDÉRIC DUMOND ET  
EMMANUEL ADELY / BEVIS MARTIN ET CHARLIE  
YOULE / EVA & ADELE / SARAH FAUGUET ET DAVID  
COUSINARD / JOHN GIORNO ET UGO RONDINONE

In 1997, Saint-Jean-de-Boiseau acquired the château du Pé (the Pé castle) and the beautiful seven hectares parkland surrounding it. Wishing to make a cultural site and a lodge for hikers, the city of Saint-Jean-de-Boiseau called on Estuaire to equip 6 bedrooms.

A castle built on a mound, dominating on one side a pond, and on the other the vast marshes of the Loire: the setting immediately evokes the world of fairy tales.

Six pairs of artists are challenged to recreate a "room" as a place of intimacy. An imaginative bestiary, furniture hidden in walls, a window that talks, shapes coming out of the walls... Like in a fairy tale, each door opens onto a new universe, each of which is an understanding of the world and a mirror being held up to our deepest sense of being.

Some of the artists are perceived in the art world as inseparable entities (Bevis Martin et Charlie Youle, EVA and ADELE, Mrzyk and Moriceau, Sarah Fauguet and David Cousinard), some others are real life couples but had never shared a project until then (Frédéric Dumond and Emmanuel Adely, John Giorno and Ugo Rondinone).



photos © Bernard Renaux

**To rent:** from €88 / [www.chateaudupe.fr](http://www.chateaudupe.fr)

For a night or a week, alone or with friends or family, enjoy the unique hospitality knowhow of Surprenantes in exceptional places.

**Free access on Sunday from 2pm to 6pm** (except from the 24/12/2017 to the 10/02/2018 )

GPS : 47.198675 / -1.721239

*"Chambres d'artistes au château du Pé" have been designed as part of the public procurement of the ministry of Culture and Communication – DRAC (Regional Direction of cultural affairs) of the Pays de la Loire.*

## ESTUAIRE NANTES<>SAINT-NAZAIRE THE TRAIL ON THE ESTUARY



© Martin Argynoglo

### BY THE SOUTH SAINT-JEAN-DE-BOISEAU CHÂTEAU DU PÉ **JEPPE HEIN** *DID I MISS SOMETHING ?*

Near the lake, a bench invites visitors to contemplate the castle. While sitting down, they are surprised by a 20-metres (65-foot) high gush of water. As soon as they stand up, the "fountain" stops and visitors realize they are making it work.

-

Uncluttered down and geometrical objects, discreet and playful installations, Jeppe Hein's (1974, Copenhagen) works can be seen as belonging to the tradition of minimalist sculpture, while at the same time contradicting it: spectators can modify these works since their presence activates apparently inanimate objects – or, on the contrary, certain works come to life only when the public is absent.

[www.jeppehein.net](http://www.jeppehein.net)

-  
GPS : 47.198675 / -1.721239



© Bernard Renoux

### BY THE SOUTH LE PELLERIN CANAL DE LA MARTINIÈRE **ERWIN WURM** *MISCONCEIVABLE*

The Canal de la Martinière, inaugurated in 1892, was built to reach Nantes' port more easily. Today, it is used for hydraulic regulation, and you can find boat lovers or plant enthusiasts, people fishing...

*Misconceivable* is a bended sailboat as if irresistibly drawn to the river.

-

Having started to work with sculptures "by chance", Erwin Wurm (1954, Austria) has always enjoyed challenging rules and habits. By using day to day objects, video, design and photography, Erwin Wurm's work solidly questions contemporary sculpture. Imbued with a dramatic sense of humour, his work pushes ordinary moments into the absurd.

Obsessed by human capacity to "sculpturally" transform, he applies those human characteristics (thinness, obesity) to social features, like a car or a house. For him, objects, like human, undergo a thought process.

Do objects have a soul? Erwin Wurm replies with a resounding "yes!"

[www.erwinwurm.at](http://www.erwinwurm.at)

-  
GPS : 47.207804 / -1.78347





© Gino Maccanelli

BY THE SOUTH  
PAIMBOEUF  
**KINYA MARUYAMA**  
*LE JARDIN ÉTOILÉ*

Based on the constellation of Ursa Minor and the four cardinal points, architect-artist-landscape designer Kinya Maruyama used vernacular materials to build *Le Jardin étoilé*. Visitors experience this space: here, you can walk, play, sit, breathe, or contemplate.

Created for Estuaire 2007, *Le Jardin* has evolved. In 2012, Kinya Maruyama further embedded the garden in its natural element: the changes made to it are primarily vegetal.

-

Team Zoo is a variable association of architects created in Takamasa Yoshizaka's workshop at Waseda University in Tokyo. It is made up of about ten teams, which were dispersed from two original groups, Mobile Workshop founded in 1969 by Kinya Maruyama, then the ZO Workshop in 1971.

For Team Zoo, a construction is not an object – it is a place for discussion, an integration tool, which must, like an item of clothing, not hinder movement and, like a landscape, evolve with time.

*Work created with the participation of the following schools in Paimbœuf: école publique Louis-Pergaud, école privée du Sacré-Cœur, collège Louise-Michel, lycée professionnel Albert-Chassagne, as well as lycée Louis-Brossaud from Saint-Nazaire and the Architectural Schools of Nantes and Tokyo.*

-  
GPS : 47.286477 / -2.017290



© Martin Anyaglo

BY THE SOUTH  
SAINT-BREVIN-LES-PINS  
**HUANG YONG PING**  
*SERPENT D'Océan*

At "the lateral limit of the ocean" (the border where the river and ocean meet), Huang Yong Ping's (1954, China) skeleton of an enormous sea-serpent surges out of the sea, as if it had just been found in an archaeological dig. Its movement makes it look alive: with its disproportionate body, one imagines that it crossed the seven seas before washing up on this beach. The shape of its spine echoes the curve of the Saint-Nazaire bridge, and the way it sits is reminiscent of the architecture of "les carrelets", the distinctive off-shore fisheries on the Atlantic coast.

-

By having a major figure from Chinese mythology on an European shore, Huang Yong Ping examines the notions of identity and cultural hybridity, as is often the case in his work. The environmental question is also very present in his art where he regularly exposes the paradox of the man sawing the branch he is sitting on, torn between creative abilities and destructive impulses.

This is one of the many possible interpretations of this work: placed on the beach, the skeleton appears with the tide and, little by little, will be home to marine fauna and flora.

-

GPS : 47.265929 / -2.170647

*Work co-financed by the European Union – Europe is committed to the Pays de la Loire with the European Regional Development Fund (ERDF)*

## ESTUAIRE NANTES<>SAINT-NAZAIRE THE TRAIL ON THE ESTUARY



© Bernard Renoux

### BY THE NORTH LAVAU-SUR-LOIRE **TADASHI KAWAMATA** *L'OBSERVATOIRE*

In Lavau, following the intensive public works of digging the channel and filling the Loire, the river withdrew, leaving a large swampland behind.

Tadashi Kawamata offers a new view of the river by creating a trail leading to an observatory. At 40 cm (15 inches) off the ground, and 800 metres (half a mile) long, without any handrail, this walkway, which is linked to the village, allows visitors to experience a true immersion in nature.

-

To design his projects, Tadashi Kawamata begins with an attentive study of a given site (history, geography, lifestyle). He often constructs a bridge – a link between past and present, between one population and another – which he builds out of wood, his fetish material. He then creates a working community, a «melting pot» of people from the village and foreign students, which is just as important as the work itself, for its creation.

[www.tk-onthetable.com](http://www.tk-onthetable.com)

-

Accessible to disabled except for the tower.

Walking time back and forth : 40mn.

Big tides can partially recover the path offering a new vision of this remarkable site.

-

GPS : 47.29914 / -1.972818

*This work created for Estuaire 2009 has been designed as part of the public procurement of the ministry of Culture and Communication – DRAC (Regional Direction of cultural affairs) of the Pays de la Loire, in collaboration with Le Conservatoire du Littoral and le Plan Loire grandeur nature, thanks to financial support from the EDF Fondation for the EDF group, Official Partner.*



© Bernard Renoux

### BY THE NORTH CORDEMAIS **TATZU NISHI** *VILLA CHEMINÉE*

By playing with perspective, Tatzu Nishi pits himself against the colossal size of the “iron castle” power plant by making an identical copy of a tower. At the top sits a tiny cottage with a garden – straight out of the 1970s, like so many others in the surrounding area – where one can stay. With this work, Tatzu Nishi creates a truly visual shock, pushing us to develop our imagination.

-

Japanese artist born in 1960, Tatzu Nishi likes to play with conventions, especially aesthetic conventions. Alternatively named Tazro Niscino, Tatsuro Bashi, or Tatzu Oozu, he uses the same playful and mischievous attitude to swiftly re-contextualise familiar household objects or public monuments: an upside down lamp post becomes a kitchen “chandelier”, a cherub from Basel’s cathedral ends up on the coffee table of a living-room... and for *Estuaire 2007*, the fountain of Place Royale, the sculpture of Amphitrite allegorically representing Nantes surrounded by the Loire river and its tributaries, becomes the majestic set for a hotel room !

[www.tatzunishi.net](http://www.tatzunishi.net)

-

**Visit (free access) Sundays from 2pm to 6pm** (except from the 24/12/17 to the 10/02/18).

Non accessible for disabled.

**To rent for one night (breakfast included) :** from €119 to €129

*On reservation with [www.nantes-tourisme.com](http://www.nantes-tourisme.com)*

*From abroad : + 33 (0) 272 640 479 /*

*From France : T. 0 892 464 044 (0,35€/mn)*

-

GPS : 47.281572 / -1.896419

*This work created for Estuaire 2009 has been designed as part of the public procurement of the ministry of Culture and Communication – DRAC (Regional Direction of cultural affairs) of the Pays de la Loire. Assistance from Spie Ouest Centre and technical support from Eiffage. Special thanks to the EDF power station of Cordemais*





© Bernard Renoux

BY THE NORTH  
COUËRON  
**JEAN-LUC COURCOULT**  
*LA MAISON DANS LA LOIRE*

In 2007, Jean-Luc Courcoult was attracted to the town of Lavau and its marshlands, creating *La Maison dans la Loire* at the edge of the village. The currents got the better of it and, today, *La Maison* has taken up residence in Couëron once and for all. Located between the river and the countryside, hub of 19th century industrialization, Couëron has a remarkable architectural heritage.

Jean-Luc Courcoult, founder of Royal de Luxe, is a man full of extraordinary journeys and incredible stories. "A house where the foundations, stuck in the silt, tilts slightly, its shutters closed and its rooms uninhabited. It seems as lonely as we can sometimes be in nature. The image is realistic yet poetic. Concrete, secretive, silent, this sleepy house in the Loire could be a picture, a three-dimensional painting settled in time. Motionless. (...) That is what I call imaginary realism. 'Realism' because we are dealing with concrete, tangible, palpable, and absolute reality. And 'imaginary' because the goal is to introduce a little dreaming into people's lives." (Jean-Luc Courcoult).

[www.royal-de-luxe.com](http://www.royal-de-luxe.com)

- To be seen from the jetty on Quai Émile-Paraf (200 metres from la tour à plomb)

- GPS : 47.208489/ -1.717466



© Gino Maccarinielli

BY THE NORTH  
INDRE  
**JIMMIE DURHAM**  
*SERPENTINE ROUGE*

The strange "industrial animal" rising out of the pontoon is composed of tubing that calls to mind a seaserpent or a dragon over 40 metres (43 yards) long. It leaps out of the water, creeping and rearing up to face the Loire, its "mouth wide open". The snake symbolizes the river; and the tubing represents a "conduit" for the imagination, breaking the walls – while linking them together – between spaces and hierarchies: water/sky, over/under, visible/invisible, past/future...

-

Jimmie Durham is a Cherokee, born in Arkansas in 1940. Visual artist and political activist for the American Indian Movement and civil rights, he now lives in Europe. Advocating total freedom, Jimmie Durham questions the art establishment and its hierarchical system. His work systematically staggers his audience. By altering common objects, found or recovered, and turning them into mysterious creatures out of a curiosity lab, symbols of the existence of an imaginary world, he describes what is out of reality, what is strange. Referring to the "wild thinking" concept and the Outsider Art, his work references language, words, images, DIY aesthetic and offers an ironic take on ethnographical conventions.

-

- To be seen from the landing stage of the ferryboat in Basse-Indre.

-

- GPS : 47.197672 / -1.672534



© Franck Tomps



## NORTH BANK

INDRE

## VINCENT MAUGER

LES SÉMAPHORES

A proposal from Pôle Métropolitain Nantes-Saint-Nazaire

For the metropolitan region of Nantes Saint-Nazaire, Vincent Mauger has built a series of oak sculptures along the estuary resulting in a series of viewpoints overlooking the Loire. Drawing inspiration from old communication towers where flags were once waved to create visual landmarks along the river, Vincent Mauger's five se-maphores offer a number of stops along the bike path connecting Nantes and Saint-Nazaire.

Only accessible on foot or by bike. Platform limited to 2 adults at the time. Floodable zones are off-limits in winter.

*En partenariat avec les communes et intercommunalités hôtes et le Grand port maritime Nantes Saint-Nazaire. Avec le soutien de l'Union européenne (FEDER) et le Programme des investissements d'avenir (fonds Ville de demain).*

*Retrouvez des vues panoramiques et plus d'informations sur l'estuaire, son histoire, ses paysages : [www.eauepaysages.fr](http://www.eauepaysages.fr)*

GPS :  
SAINT-HERBLAIN, QUAI ÉMILE CORMERAIS : 47.194444 / -1.619988  
COUÉRON, ÎLE DE LA LIBERTÉ : 47.208637 / -1.730526  
SAINT-ÉTIENNE-DE-MONTLUC, L'ANGLE : 47.264523 / -1.85056  
DONGES, LA TAILLÉE : 47.315616 / -2.013185  
SAINT-NAZAIRE, RUE DE L'AVIATION : 47.29423 / -2.181184

## THE TRAIL IN SAINT-NAZAIRE



15 Terrasse panoramique de l'écluse fortifiée  
**FELICE VARINI**  
*Suite de triangles Saint-Nazaire 2007*



14 Toit de la base sous-marine  
**GILLES CLÉMENT**  
*Le Jardin du Tiers-Paysage*





© André Marin

## ROOF OF THE PANORAMIC TERRACE **FELICE VARINI** *SUITE DE TRIANGLES* *SAINT-NAZAIRE 2007*

The work, set up on 2 km, is the largest made by the artist. From a view point on the roof terrace, it embodies a "horizontal line" that embraces the landscape of the port and is superimposed on the architecture on which it seems to belong. Exit the point of view, is to witness the collapse of the figure.

Born in 1952, the work of the French-Swiss artist Felice Varini belongs to the field of painting. Since the 1970s, Felice Varini has been developing a work, which is located on the margins of pictorial creation. Whether closed spaces or urban landscapes, his painting is deployed outside the actual painting itself or even the architectural elements present. Here, the vastness of the landscape and its industrial identity challenged his capacity to explore space.

[www.varini.org](http://www.varini.org)

Openings hours change each season.  
More information on: [www.estuaire.info](http://www.estuaire.info)  
Wintry closure in January  
Panoramic terrace accessible for assisted disabled.  
Point of view not accessible.

GPS : 47.275284 / -2.199191

Special thanks to the companies concerned by the intervention of the artist and to the Grand Port Maritime de Nantes Saint-Nazaire.



© Martin Argyroglo

## TOIT DE LA BASE SOUS-MARINE **GILLES CLÉMENT** *LE JARDIN DU TIERS-PAYSAGE*

Accessible to the public since 1998 with project planner Manuel de Sola Morales, the roof is an open terrace between the city and the harbor basin. Gilles Clément sees the submarine base as "a place of resistance" that can accommodate the ecological diversity of the estuary. The triptych (*Le Bois de Trembles*, *Le Jardin des Euphorbes*, *Le Jardin des Étiquettes*) takes advantage of three architectural features on the submarine base's roof.

Born in 1943, Gilles Clément is in turn a gardener, an architect and landscape artist, an agricultural engineer, a botanist, an entomologist, a writer and a professor.

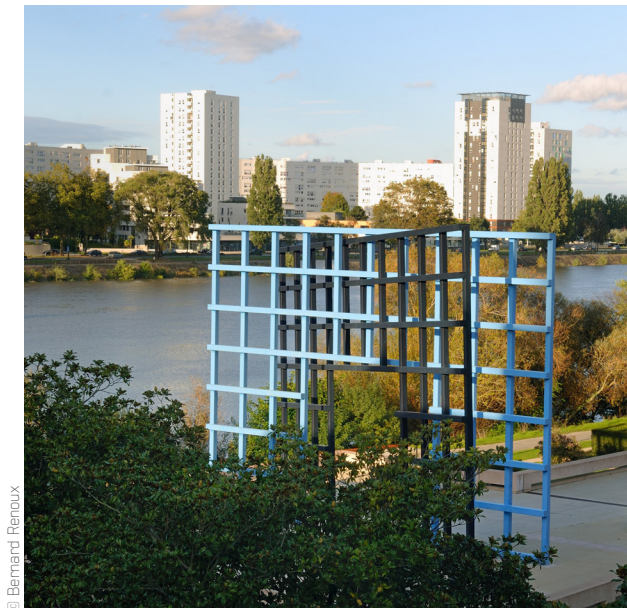
Known to be one of the greatest landscaper and garden theorician, he has worked out in particular the gardens of: the Parc André Citroën, the Domaine Rayol, the Valloire Abbey, the Blois Castle, or the garden of the Arche.

Gilles Clément extols the virtues of a practice that gives importance and value to the dynamic and natural evolution of a garden. His creed: do the maximum with, and the minimum against.

[www.gillesclement.com](http://www.gillesclement.com)

From the 1<sup>st</sup> of October to the 31<sup>st</sup> of May: 9am > 5.30pm  
and from the 1<sup>st</sup> of June to the 30<sup>th</sup> of September: 9am > 10pm.  
Closed in case of wind above 70km/h

GPS : 47.276732 / -2.202362



© Bernard Renoux

ÎLE DE NANTES (EASTERN POINT)  
HÔTEL DE RÉGION  
**FRANÇOIS MORELLET**  
*PORTAIL 0°-90°, PORTAIL 8°-98°*

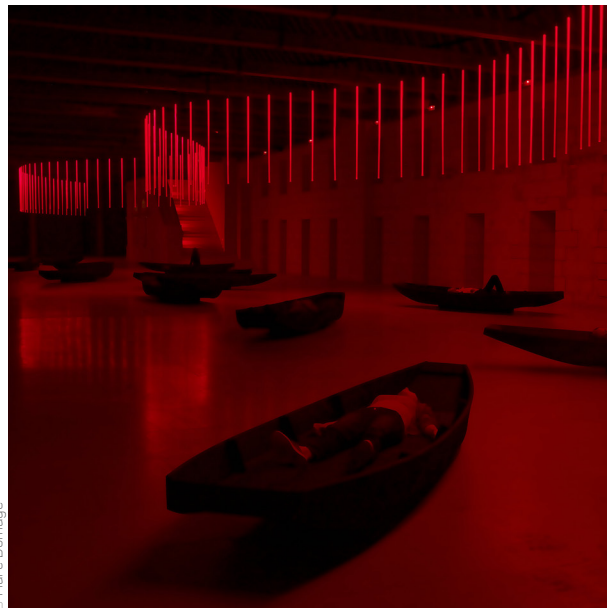
In making this piece, the artist had fun with the restrictions imposed upon him: first, the creation of the main gate of the public square, and second, the location: on one side, the lines of the building, on the other, the Loire river. If the first gate, straight and solemn, indicates the entrance to the Hôtel de Région square and fulfills the expressed demand, the second gate shakes it up: it is confusing and disturbing, referring to the Loire river, which is already guilty for the sinking of some of Nantes' great mansions.

With this artwork, realized in 1987, François Morellet gives here a vision of the river. It is this link to the Loire river that we wanted to valorize by integrating this artwork in the *Estuaire* trail.

-

GPS : 47.211845 / -1.525525

From the same artist, *De temps en temps* (cf. page 8)



© Marc Dommage

ABBAYE ROYALE DE FONTEVRAUD  
**CLAUDE LÉVÊQUE**  
*MORT EN ÉTÉ*

Considered to be one of the largest monastic complexes in Europe, the Abbaye de Fontevraud is striking for its architectural diversity. Since being made the Centre Culturel de Rencontre in 1975, it has become an important place for its history and creativity.

*Mort en été* has been designed for the Abbey's main dormitory. It evokes a floating dream, between the haunting light of the Loire river and the mists of a red sky, with the tiny refrain of some song repeated somewhere in the distance...

-

Claude Lévêque (1953, Nevers) has presented his work throughout the world: museums, galleries, art centres, various spaces including industrial wastelands, shops, parks... Between a memory of childhood and places and a political vision of our society, his works capture space, and architecture, their uses and meanings, and the multiple mental and concrete relationships they establish with the public.

[www.claudeleveque.com](http://www.claudeleveque.com)

-

Departing from Nantes by car: 2h30.

**Opening hours of the monument on [www.fontevraud.fr](http://www.fontevraud.fr)**  
**or T. 02 41 51 73 52 / €7,50 – €11 (Free – 8 years old).**

*Work co-produced with the Abbaye de Fontevraud and Estuaire as part of La Cité idéale 2012 (Theme «Une nuit à Fontevraud»)*





© Isabelle Menenteau

## GAËTAN CHATAIGNER, A SENSIBLE, AMUZING AND POETIC EYE ON THE ESTUAIRE

Born in 1969, Gaëtan Chataigner is a musician (The Little Rabbits, The French Cowboy) and also a videoclips and DVDs director. He worked for several artists such as Sébastien Tellier, Étienne Daho (reinterpretation of Fritz Lang Metropolis), Bernard Lavilliers, Dominique A, and Philippe Katerine (his work with him has been awarded of a Victoire de la musique for best musical videoclip in 2011).

In 2009, Gaëtan Chataigner signs thirteen short and silent films. Each of them presents an artwork of this artistic journey between Nantes and Saint-Nazaire.

In 2012 Le Voyage à Nantes invites Gaëtan Chataigner to realize a new film expressing his vision of the territory. Entitled *Estuaire*, this fiction presents the itinerary and its particular atmosphere, following the art pieces found along the Loire river.

This time, the director portrays a man dressed in a white suit holding a red surfboard : this golden surfer is played by Julien Doré (a french singer). Unbridled race across *Les Anneaux* by Daniel Buren and Patrick Bouchain, awake dream in a Château du Pé bedroom signed Mrzyk & Moriceau, improbable meeting on the Loire... All narrative primers denote with humour and poetry the richness of *Estuaire*.

### “ESTUAIRE”



FIND ALL MOVIES ON : <https://vimeo.com/58191391>

## HOW TO VISIT *ESTUAIRE* ?

---

### ALL YEAR LONG...

All sites are in open access, and have a disabled access.  
On each site, you will find information boards in English giving you details of the work and the artist.

Every course can be done by car, by foot, by bike or by public transport.

#### Minimum and maximum length of time for discovery:

- From one of the urban itineraries or from a river bank : ½ day, one day ;
- From the entire itinerary : 2 days.

- -

**A map of the *Estuaire* itinerary is available for free** in Nantes.Tourisme Offices and at various stages of the itinerary.

.- -

#### Itinerary signs

On departmental routes, *Estuaire* road signs guide to municipalities concerned by art pieces.

-----

### **ESTUAIRE BY BICYCLE**

If you want to enjoy the cultural sites and be a green, eco-friendly tourist, see it all on a bike! A specific circuit starting in Nantes, indicated by signs, allows you to find your way throughout your tour.

Maps of the circuit, suggestions and user comments, must-see heritage sites... Prepare your trip on the Loire à vélo website: [www.loire-a-velo.fr](http://www.loire-a-velo.fr)

-----

### FROM APRIL TO OCTOBER, THE *ESTUAIRE* CRUISE

Embark on a river cruise and discover the beauty of the Loire and the diversity of the surrounding landscapes. Rich wildlife preserves rub shoulders with gigantic industrial buildings and maritime heritage sites.

#### Artworks that are visible from the boat:

*Les Anneaux* de Daniel Buren et Patrick Bouchain / *Lunar Tree* de Mrzyk & Moriceau / *Belvédère de L'Hermitage* de Tadashi Kawamata / *Le Pendule* de Roman Signer / *The Settlers* de Sarah Sze / *Serpentine rouge* de Jimmie Durham / *La Maison dans la Loire* de Jean-luc Courcoult / *Misceanceivable* d'Erwin Wurm / *Villa Cheminée* de Tatzu Nishi / *Le Jardin étoilé* de Kinya Maruyama.

### **LES ÉCOUTILLES MUSICAL NIGHT CRUISES**

Far from the madding crowds, this cruise also becomes a musical journey. Aboard, DJ's take turns on the decks to accompany your discovery of the estuary's unparalleled landscapes. On the programme: acoustic, pop, electro, funk... there's something for everyone!

- -

**Programme created in co-operation with Paradise Prod.**  
[www.lesecoutilles.fr](http://www.lesecoutilles.fr) (from May 2020)

### HOW TO GET INFORMATION ?

#### - BY TELEPHONE

**From France: 02 40 75 75 07**

**From abroad: +33 272 640 479**

**Monday to friday: 9am to 6pm (Thursday : 10am > 6pm)**

**Week-end and bank holidays: 10am > 1pm - 2pm > 5pm**

**From 6 Jul to 1 september: 7 days a week - 9am > 6pm**

#### - IN NANTES

##### **NANTES.TOURISME OFFICE**

Rue des États (In front of the Château des ducs de Bretagne)

**Monday to saturday: 10am > 6pm**

**Sunday and bank holidays: 10am > 5pm**

**From 6 Jul to 1 september: 7 days a week - 9am > 7pm**

##### **STATION PROUVÉ**

Parc des Chantiers (nearby Les Machines de l'île)

**From 6 Jul to 1 september: 7 days a week - 10am > 6pm**

#### - IN SAINT-NAZAIRE :

Tourism office Base sous-marine (Submarine Base)

Bd de la Légion-d'Honneur, Ville-Port

T. 02 40 22 40 65

#### - **WWW.ESTUAIRE.INFO**



# COME IN NANTES...



## BY TRAIN / TGV

Within 2 hours from Paris by TGV from Paris Montparnasse train station (15 departures in a day).  
Within 4 hours from Lille and Bordeaux.  
Within 4 hours 30 from Lyon.  
Within 5 hours 10 from Strasbourg.  
[www.voyages-sncf.com](http://www.voyages-sncf.com)

### THE TRAMWAY (LINE 1)

located at the northern exit of the train station will enable you to join the town centre.

## NANTES-ATLANTIQUE AIRPORT

First international airport of the western region with more than 100 direct destinations, regular, holidays and weekends.  
[www.nantes.aeroport.fr](http://www.nantes.aeroport.fr) "Atterrir à Nantes"

**Recommendation:** at your arrival, take the airport shuttle that will take you to the heart of the city.

## BY CAR

A11 from Paris via Le Mans-Angers  
A83 from Bordeaux  
RN 165 from Brest  
RN 137 from Rennes

As soon as you arrive by car, park your car in one of the Parkings Relais (P+R) and take advantage of the tramway and of the busway. Paid parkings are also available in the city centre on: [www.nge-nantes.fr](http://www.nge-nantes.fr) "situation des parkings"

### Recommended free parking (200 spaces):

Parking Wilson, quai Wilson; Parc des Chantiers (Île de Nantes)



Le Voyage à Nantes is a structure arose from Nantes Métropole and the City's political will to reach a new stage to become prominent in the alliance of European cities. Unique in France, this structure, generating itself a large number of projects, combines development, cultural enhancement and tourism development. It asserts the choice of culture as a tool for attractiveness and for business creations.

It manages the open-air museum *Estuaire Nantes<>Saint-Nazaire* and within the framework of an outsourcing of public services agreement Nantes.Tourism, as well as the Castle of the Dukes of Brittany, Les Machines de l'île.

Le Voyage à Nantes is a Local Public Corporation whose capital is owned by Nantes Métropole, the City of Nantes, the Pays de La Loire region, the Loire-Atlantique department, the city of Saint-Nazaire, the communities of municipalities Estuaire et Sillon and Sud Estuaire. It is fully supported by the territory's economic and institutional partners.

[www.levoyageanantes.fr](http://www.levoyageanantes.fr)

Artistic programming:

Jean Blaise, General Director of Le Voyage à Nantes



**ESTUAIRE**  
**NANTES<>SAINT NAZAIRE**  
**LE PAYSAGE, L'ART ET LE FLEUVE**  
**WWW.ESTUAIRE.INFO**

**nantes.tourisme**

All about the destination, your professional web portal and online reservation services (accommodation, stay, food service, tickets sale, information,...):  
**[www.nantes-tourisme.com](http://www.nantes-tourisme.com)**